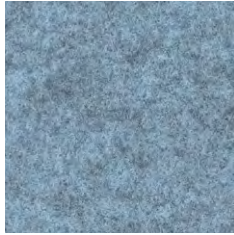


Chime *
10000012855

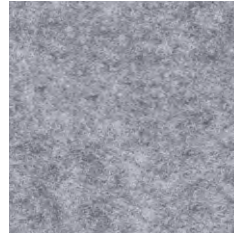
FHU10



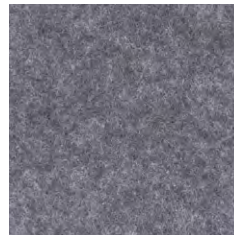
Vocal * FHU08
10000012854



Audio * FHR06
10000012853



Beat * FHR03
10000012834



Music * FHU04
10000012836



Amp * FHR05
10000012856

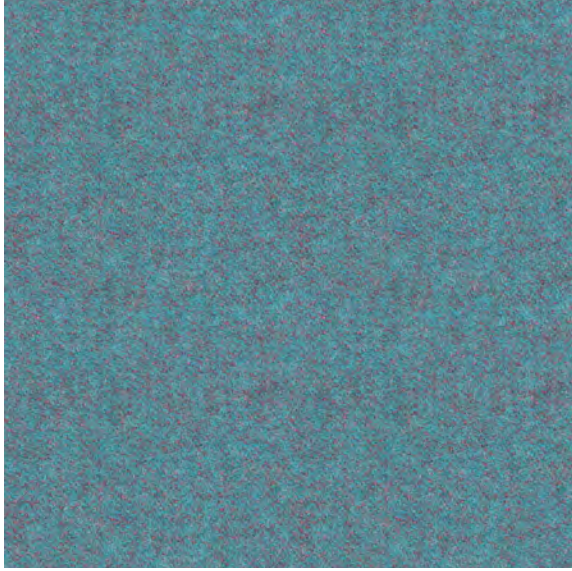
* Stoklu kumaş
Fabric available in stock

TR

Kumaşın Yapısı	FHR: 72% Polyester, 18% Poliamit, 10% Viskoz FHU: 57% Polyester, 43% Poliamit
Ağırlık	200g/m2 ±10%
Genişlik	170cm
Aşınma	-
Boncuklaşma	-
Yanmaya karşı dayanıklılık	Sonus BS 476 Part 7 Sınıf 1 Sonus BS EN 1021- Sigara
Solmaya karşı dayanıklılık	5
Sürtünmeye karşı dayanıklılık	-
Kumaş Bakımı	Düzenli aralıklarla vakumlu temizleme aleti yardımıyla temizlenmelidir. Profesyonel kuru temizleme ile veya nemli bezle silinerek temizlenebilir.
Renk uyumu	-
Çevresel duyarlılık	-

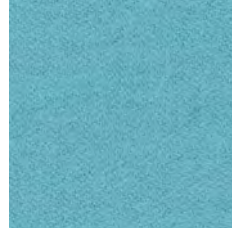
EN

Composition	FHR: 72% Polyester, 18% Polyamide, 10% Viscose FHU: 57% Polyester, 43% Polyamide
Weight	200g/m2 ±10%
Width	170cm
Abrasion Resistance	-
Pilling	-
Flammability	Sonus BS 476 Part 7 Class 1 Sonus BS EN 1021- Cigarette
Light Fastness	5
Fastness to Rubbing	-
Maintenance	Vacuum regularly. Professionally dry clean or wipe clean with a damp cloth.
Colour Matching	-
Environment	-



Kinship *

LDS56



Support
10000012921

LDS55



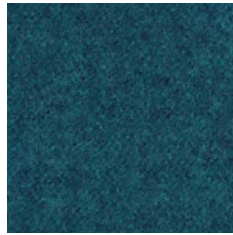
Engage
10000012920

LDS57



Alike *

LDS62



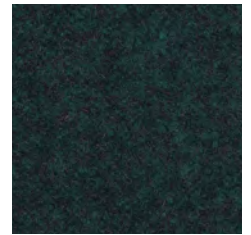
Group *
10000012524

LDS59



League *
10000012794

LDS50



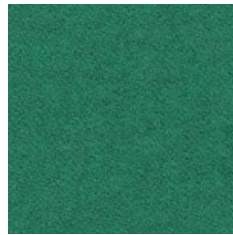
Accord
10000012932

LDS60



Kindness
10000012922

LDS51



Comply
10000012923

LDS52



Gather
10000012925

LDS46



Lateral
10000012926

LDS28



Pact
10000012924

LDS53



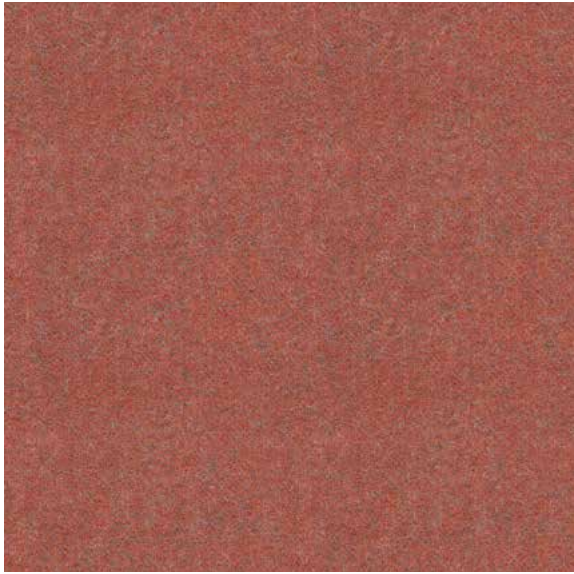
Relate *
10000012927

LDS44

* Stoklu kumaş
Fabric available in stock

Kumaşın Yapısı:	%95 İşlenmemiş Yün, %5 Poliamit
Ağırlık:	400g/m2 ±5%
Genişlik:	140 cm
Aşınmaya Karşı Dayanıklılık:	100.000
Boncuklaşma	Islak: 4, Kuru: 4 (ISO 105 - X12)
Yanmaya Karşı Dayanıklılık:	EN 1021 - 1 Sigara EN 1021 - 2 Kibrit NF D 60-013 EN 13501-1 Yapıştırılmış Sınıf D, s1, d0 EN 13501-1 Yapıştırılmamış Sınıf E, s2, d0 EN 13501-1 Yapıştırılmış Sınıf B, s1, d0, alev geciktiricilik işlemi ile EN 13501-1 Yapıştırılmamış Sınıf D, s2, d0, alev geciktiricilik işlemi ile BS 5867 : Kısım 2 : Tip B Perdeler, alev geciktiricilik işlemi ile Synergy BS 7176 Düşük Tehlike Synergy UNI 9175 Sınıf 1 IM Synergy ÖNORM B 3825 & A 3800-1 Synergy BS 7176 Orta Tehlike, alev geciktiricilik işlemi ile Synergy BS 5852 Tutuşturma Kaynağı 5, alev geciktiricilik işlemi ile 5
Solmaya Karşı Dayanıklılık:	Islak: 4, Kuru: 4 (ISO 105 - X12)
Sürtünmeye Karşı Dayanıklılık:	Düzenli aralıklarla vakumlu temizleme aleti yardımıyla temizlenmelidir. Profesyonel
Kumaş Bakımı:	kuru temizleme ile veya nemli bezle silinerek temizlenebilir.
Renk Uyumu:	-
Çevresel Duyarlılık:	AB Eko-Etiketi Sertifikal

Composition:	95% Virgin Wool, 5% Polyamide
Weight:	400g/m2 ±5%
Width:	140 cm
Abrasion Resistance:	100.000
Pilling	Wet: 4, Dry: 4 (ISO 105 - X12)
Flammability:	EN 1021 - 1 Cigarette EN 1021 - 2 Match NF D 60-013 EN 13501-1 Adhered Class D, s1, d0 EN 13501-1 Un-adhered Class E, s2, d0 EN 13501-1 Adhered Class B, s1, d0 when FR treated EN 13501-1 Un-adhered Class D, s2, d0 when FR treated BS 5867 : Part 2 : Type B Curtains & Drapes when FR treated Synergy BS 7176 Low Hazard Synergy UNI 9175 Classe 1 IM Synergy ÖNORM B 3825 & A 3800-1 Synergy BS 7176 Medium Hazard when FR treated Synergy BS 5852 Ignition Source 5 when FR treated 5
Light Fastness:	Wet: 4, Dry: 4 (ISO 105 - X12)
Fastness to Rubbing:	Vacuum regularly. Professionally dry clean or wipe clean with a damp cloth.
Maintenance:	-
Colour Matching:	-
Environment	EU Ecolabel Certified



Work *
10000012912

LDS73



Success
10000012845

LDS76



Values
10000012823

LDS87



Share
10000012824

LDS85



Medley
10000012917

LDS36



Global
10000012915

LDS86



Apt
10000012916

LDS80



Warmth
10000012919

LDS67



Mutual
10000012914

LDS84



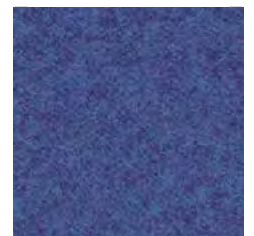
Similar
10000012913

LDS81



Order *
10000012918

LDS64



Collaborate *
10000012793

LDS68



Interfuse *

LDS48



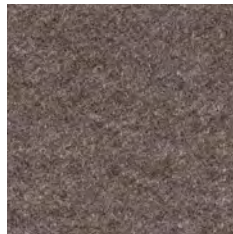
Intertwine
10000012672

LDS42



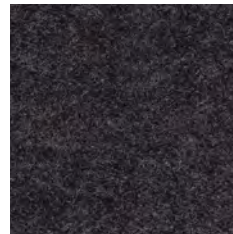
Affix *

LDS32



Tag
10000012929

LDS33



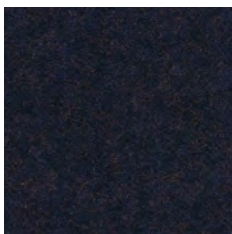
Wed
10000012931

LDS34



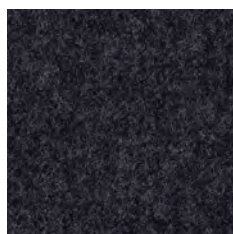
Serendipity *

LDS08



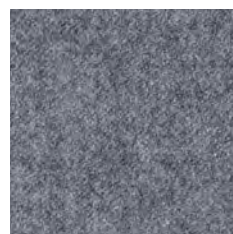
Assemble
10000012843

LDS61



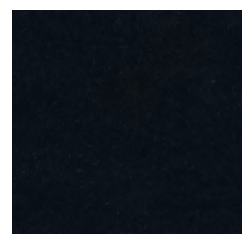
Mix *

LDS17



Partner *

LDS16



Seek
10000012969

LDS27